

Datenbanken 1 – Proseminar (501.073)

Übung 1.

Bestimmen Sie angemessene Primärschlüssel und Fremdschlüssel für das folgende relationale Schema.

(a)

Customer[c_id, c_name, city]
 Order[o_id, o_date, c_id, o_sum]
 Order_item[o_id, i_id, quantity]
 Item[i_id, unit_price]
 Shipment[o_id, w_id, s_date]
 Warehouse[w_id, city]

(b)

Car[serial_number, model, manufacturer, price]
 Option[serial_number, option_name, price]
 Sale[sp_id, serial_number, date, sale_price]
 Sales_person[sp_id, name, phone]

Übung 2.

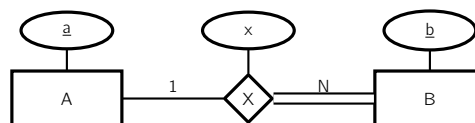
Bestimmen Sie mögliche Superschlüssel und Kandidatenschlüssel für die Relation *R*.

<i>R</i>				
<i>A</i>	<i>B</i>	<i>C</i>	<i>D</i>	<i>E</i>
1	2	1	2	1
2	2	2	2	2
1	1	1	1	1
2	1	2	1	2

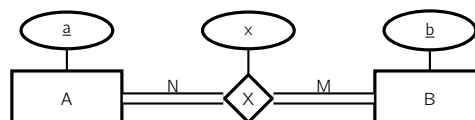
Übung 3.

Übersetzen Sie die folgenden ER Diagramme in relationale Schemata (markieren Sie Primärschlüssel und Fremdschlüssel).

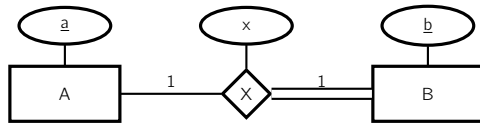
(a)



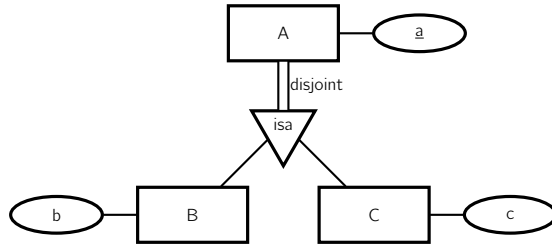
(b)



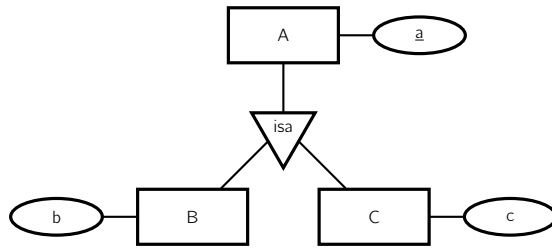
(c)



(d)



(e)



(f)

